



JSS MAHAVIDYAPEETHA

## JSS COLLEGE OF ARTS, COMMERCE & SCIENCE

(An Autonomous College of University of Mysore)  
B.N. ROAD, MYSURU-570 025 KARNATAKA

Re-accredited by NAAC with 'A' grade  
Recognised by UGC as "College with Potential for Excellence"

Ph: 0821-2548236 & 2548380. FAX: 0821-2548238 E-mail: [jssautonomous@gmail.com](mailto:jssautonomous@gmail.com) Website: [JSSCACS.edu.in](http://JSSCACS.edu.in)

### About the college

### Following is a brief profile of JSS COLLEGE OF ARTS, COMMERCE AND SCIENCE

JSS College of Arts, Commerce and Science is a co-educational College established in 1964 under the aegis of JSS Mahavidyapeetha, Mysore. The College was started as an affiliated college of University of Mysore with undergraduate programmes in BA, BSc, BCom, BBM and was given permanent affiliation in 1993. The College is recognised by UGC under section 2(f) and 12(B) of the UGC Act 1956 and is receiving central assistance. The college has been functioning as an autonomous college from the academic year 2005-06. The distinctive features of autonomy are that the college is empowered to frame the syllabi, introduce new courses and conduct examinations independently. The degree is awarded by the University of Mysore. The college is situated on a sprawling 7.08 acres plot with a spacious building and a hostel in a picturesque surrounding at the foot of Chamundi Hills. The third floor to the existing building created additional space to meet the growing needs of the college. The women hostel has also been extended to accommodate 200 students. It has excellent infrastructure required for the pursuit of academic excellence Under the spiritual guidance of H.H Jagadguru Sri Shivarathri Deshikendra Mahaswamiji, the institution is desirous of scaling new heights in the days to come. The entire spectrum of management, staff and students are committed to put in their best to make this dream come true.

### Feedback Framework

Following is the list of questions, which is taken by the stakeholders

Question	Option
Interest generated by the teacher	Very Good
Interest generated by the teacher	Good
Interest generated by the teacher	Satisfactory
Interest generated by the teacher	Below threshold
Accessibility of the teacher in and out of the class (includes availability of the teacher to motivate further study and discussion outside class)	Very Good
Accessibility of the teacher in and out of the class (includes availability of the teacher to motivate further study and discussion outside class)	Good
Accessibility of the teacher in and out of the class (includes availability of the teacher to motivate further study and discussion outside class)	Satisfactory
Accessibility of the teacher in and out of the class (includes availability of the teacher to motivate further study and discussion outside class)	Below threshold
Ability to design quizzes /Tests / assignments / examinations and projects to evaluate students understanding of the course	Very Good
Ability to design quizzes /Tests / assignments / examinations and projects to evaluate students understanding of the course	Good
Ability to design quizzes /Tests / assignments / examinations and projects to evaluate students understanding of the course	Satisfactory

Ability to design quizzes /Tests / assignments / examinations and projects to evaluate students understanding of the course	Below threshold
Provision of sufficient time for feedback	Very Good
Provision of sufficient time for feedback	Good
Provision of sufficient time for feedback	Satisfactory
Provision of sufficient time for feedback	Below threshold
Your career goal is accomplished at the end of the course	Very Good
Your career goal is accomplished at the end of the course	Good
Your career goal is accomplished at the end of the course	Satisfactory
Your career goal is accomplished at the end of the course	Below threshold
The faculties could connect with the pre requisite materials for each class	Very Good
The faculties could connect with the pre requisite materials for each class	Good
The faculties could connect with the pre requisite materials for each class	Satisfactory
The faculties could connect with the pre requisite materials for each class	Below threshold
Adequate number of workshops were conducted for the areas not covered by syllabus	Very Good
Adequate number of workshops were conducted for the areas not covered by syllabus	Good
Adequate number of workshops were conducted for the areas not covered by syllabus	Satisfactory
Adequate number of workshops were conducted for the areas not covered by syllabus	Below threshold
The quality of library facilities	Very Good
The quality of library facilities	Good
The quality of library facilities	Satisfactory
The quality of library facilities	Below threshold
The quality of compouting facilities	Very Good
The quality of compouting facilities	Good
The quality of compouting facilities	Satisfactory
The quality of compouting facilities	Below threshold
The quality of specialized laboratories	Very Good
The quality of specialized laboratories	Good
The quality of specialized laboratories	Satisfactory
The quality of specialized laboratories	Below threshold
The quality of general laboratories	Very Good

The quality of general laboratories	Good
The quality of general laboratories	Satisfactory
The quality of general laboratories	Below threshold
The quality of student support facilities	Very Good
The quality of student support facilities	Good
The quality of student support facilities	Satisfactory
The quality of student support facilities	Below threshold
The quality of sports facilities	Very Good
The quality of sports facilities	Good
The quality of sports facilities	Satisfactory
The quality of sports facilities	Below threshold
The quality of Drinking water facilities	Very Good
The quality of Drinking water facilities	Good
The quality of Drinking water facilities	Satisfactory
The quality of Drinking water facilities	Below threshold
The quality of common room	Very Good
The quality of common room	Good
The quality of common room	Satisfactory
The quality of common room	Below threshold
The course have met with the expectations	Very Good
The course have met with the expectations	Good
The course have met with the expectations	Satisfactory
The course have met with the expectations	Below threshold
The timetable was suitable	Very Good
The timetable was suitable	Good
The timetable was suitable	Satisfactory
The timetable was suitable	Below threshold
The quality of workload distribution for every week	Very Good
The quality of workload distribution for every week	Good
The quality of workload distribution for every week	Satisfactory

The quality of workload distribution for every week	Below threshold
The quality of academic counselling	Very Good
The quality of academic counselling	Good
The quality of academic counselling	Satisfactory
The quality of academic counselling	Below threshold
The quality of psychometric counselling	Very Good
The quality of psychometric counselling	Good
The quality of psychometric counselling	Satisfactory
The quality of psychometric counselling	Below threshold
The support provided to address personal financial issues	Very Good
The support provided to address personal financial issues	Good
The support provided to address personal financial issues	Satisfactory
The support provided to address personal financial issues	Below threshold
The quality of hostel accommodation	Very Good
The quality of hostel accommodation	Good
The quality of hostel accommodation	Satisfactory
The quality of hostel accommodation	Below threshold
The quality of on the job training or internship	Very Good
The quality of on the job training or internship	Good
The quality of on the job training or internship	Satisfactory
The quality of on the job training or internship	Below threshold
The quality of placement	Very Good
The quality of placement	Good
The quality of placement	Satisfactory
The quality of placement	Below threshold
The quality of soft skills training	Very Good
The quality of soft skills training	Good
The quality of soft skills training	Satisfactory
The quality of soft skills training	Below threshold
The quality of certificate courses	Very Good

The quality of certificate courses	Good
The quality of certificate courses	Satisfactory
The quality of certificate courses	Below threshold
The quality of trainings conducted	Very Good
The quality of trainings conducted	Good
The quality of trainings conducted	Satisfactory
The quality of trainings conducted	Below threshold

## Total questions answered by the all students

> Above framework has been selected for the feedback and here is the summary of responses

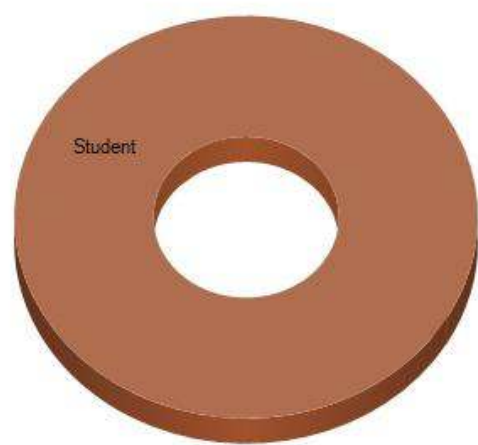


Figure1: Doughnut Diagram - number of responses

Type	Total Number
Student	2268

## Average score per question

> Below is the data, that reflects average score per question

Question	Score
----------	-------

The quality of Drinking water facilities	9.17
The course has met with the expectations	9.08
The quality of certificate courses	9.07
The quality of common room	9.32
Your career goal is accomplished at the end of the course	9.17
The quality of library facilities	9.14
The quality of computing facilities	9.35
Adequate number of workshops were conducted for the areas not covered by syllabus	9.21
Interest generated by the teacher	9.16
The quality of academic counselling	9.07
The faculties could connect with the pre requisite materials for each class	9.26
The quality of soft skills training	9.16
Ability to design quizzes /Tests / assignments / examinations and projects to evaluate students understanding of the course	9.26
Accessibility of the teacher in and out of the class (includes availability of the teacher to motivate further study and discussion outside class)	9.08
The quality of specialized laboratories	9.57
The quality of general laboratories	9.39
The support provided to address personal financial issues	9.28
The timetable was suitable	9.3
The quality of placement	9.39
The quality of on the job training or internship	9.32
The quality of sports facilities	9.41
Provision of sufficient time for feedback	9.1
The quality of student support facilities	9.12
The quality of workload distribution for every week	9.32
The quality of psychometric counselling	9.25
The quality of trainings conducted	9.12
The quality of hostel accommodation	9.46

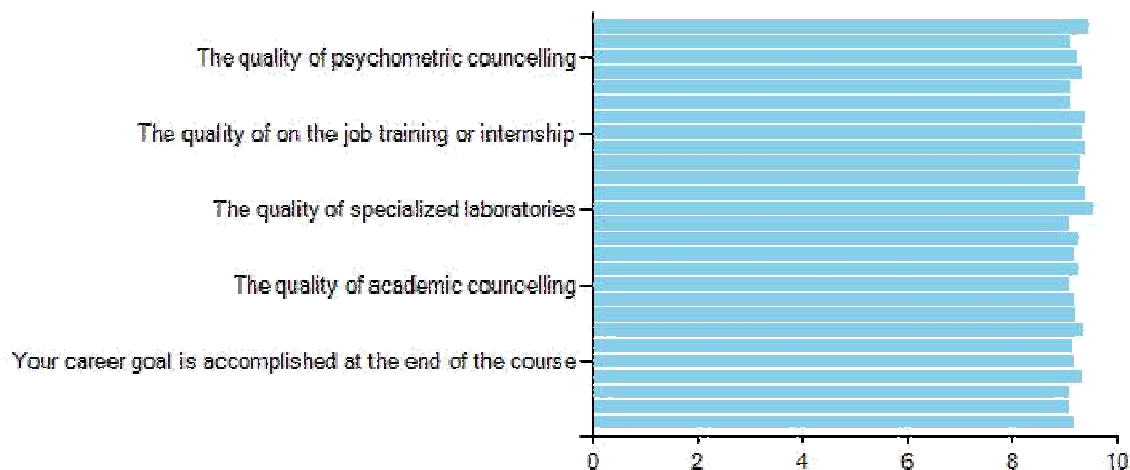


Figure3: Bar Diagram - average score per question

## Summary of responses for every option

> Below is the data that reflects, summary of responses for every option

Question	Option	Count
Ability to design quizzes /Tests / assignments / examinations and projects to evaluate students understanding of the course	Good	41
Accessibility of the teacher in and out of the class (includes availability of the teacher to motivate further study and discussion outside class)	Good	51
Adequate number of workshops were conducted for the areas not covered by syllabus	Good	44
Interest generated by the teacher	Good	47
Provision of sufficient time for feedback	Good	50
The course has met with the expectations	Good	51
The faculties could connect with the pre requisite materials for each class	Good	41
The quality of academic counselling	Good	52
The quality of certificate courses	Good	52
The quality of common room	Good	38
The quality of computing facilities	Good	36
The quality of Drinking water facilities	Good	46
The quality of general laboratories	Good	34
The quality of hostel accommodation	Good	30
The quality of library facilities	Good	48
The quality of on the job training or internship	Good	38
The quality of placement	Good	34

The quality of psychometric counselling	Good	42
The quality of soft skills training	Good	47
The quality of specialized laboratories	Good	24
The quality of sports facilities	Good	33
The quality of student support facilities	Good	49
The quality of trainings conducted	Good	49
The quality of workload distribution for every week	Good	38
The support provided to address personal financial issues	Good	40
The timetable was suitable	Good	39
Your career goal is accomplished at the end of the course	Good	46
Ability to design quizzes /Tests / assignments / examinations and projects to evaluate students understanding of the course	Very Good	43
Accessibility of the teacher in and out of the class (includes availability of the teacher to motivate further study and discussion outside class)	Very Good	33
Adequate number of workshops were conducted for the areas not covered by syllabus	Very Good	40
Interest generated by the teacher	Very Good	37
Provision of sufficient time for feedback	Very Good	34
The course has met with the expectations	Very Good	33
The faculties could connect with the pre requisite materials for each class	Very Good	43
The quality of academic counselling	Very Good	32
The quality of certificate courses	Very Good	32
The quality of common room	Very Good	46
The quality of computing facilities	Very Good	48
The quality of Drinking water facilities	Very Good	38
The quality of general laboratories	Very Good	50
The quality of hostel accommodation	Very Good	54
The quality of library facilities	Very Good	36
The quality of on the job training or internship	Very Good	46



The quality of placement	Very Good	50
The quality of psychometric counselling	Very Good	42
The quality of soft skills training	Very Good	37
The quality of specialized laboratories	Very Good	60
The quality of sports facilities	Very Good	51
The quality of student support facilities	Very Good	35
The quality of trainings conducted	Very Good	35
The quality of workload distribution for every week	Very Good	46
The support provided to address personal financial issues	Very Good	44
The timetable was suitable	Very Good	45
Your career goal is accomplished at the end of the course	Very Good	38

## Score across course

> Below is the data for the students, who have given the feedback across various courses offered

Question	PG	UG
Ability to design quizzes /Tests / assignments / examinations and projects to evaluate students understanding of the course	9.31	9.2
Accessibility of the teacher in and out of the class (includes availability of the teacher to motivate further study and discussion outside class)	9.06	9.12
Adequate number of workshops were conducted for the areas not covered by syllabus	9.09	9.37
Interest generated by the teacher	9.21	9.08
Provision of sufficient time for feedback	9.18	9
The course has met with the expectations	9.09	9.08
The faculties could connect with the pre requisite materials for each class	9.4	9.08
The quality of academic counselling	9	9.16
The quality of certificate courses	9.06	9.08
The quality of common room	9.31	9.33
The quality of computing facilities	9.28	9.45

The quality of Drinking water facilities	9	9.41
The quality of general laboratories	9.46	9.29
The quality of hostel accommodation	9.43	9.5
The quality of library facilities	9.28	8.95
The quality of on the job training or internship	9.56	9
The quality of placement	9.5	9.25
The quality of psychometric counselling	9.34	9.12
The quality of soft skills training	9.09	9.25
The quality of specialized laboratories	9.53	9.62
The quality of sports facilities	9.31	9.54
The quality of student support facilities	9.28	8.91
The quality of trainings conducted	9.25	8.95
The quality of workload distribution for every week	9.4	9.2
The support provided to address personal financial issues	9.37	9.16
The timetable was suitable	9.46	9.08
Your career goal is accomplished at the end of the course	9.21	9.12

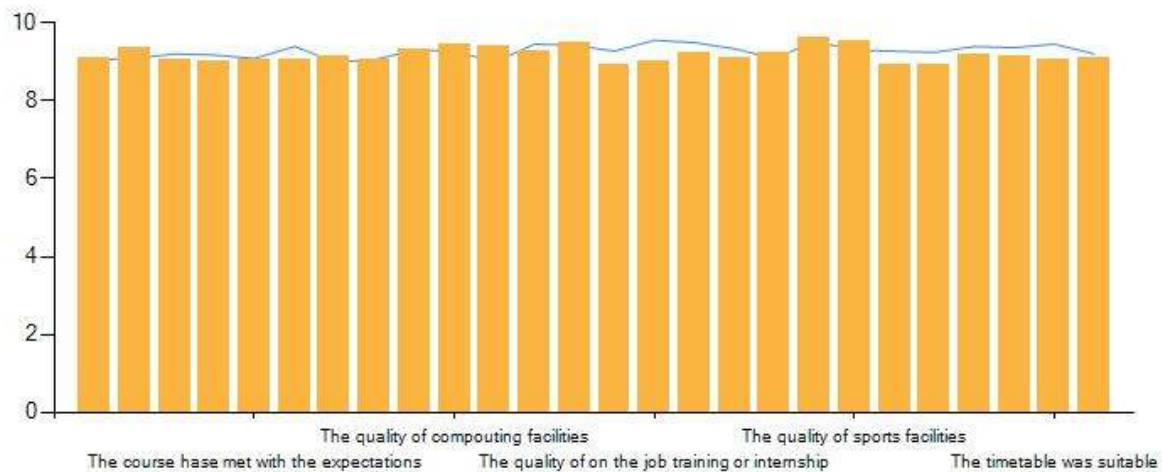


Figure4: Spline Diagram - score across course

## Score across batch

> Below is the data for the students, who have given the feedback across various batches

Question	2013	2013-14	2014
Ability to design quizzes /Tests / assignments / examinations and projects to evaluate students understanding of the course	9.5	8.75	9.45
Accessibility of the teacher in and out of the class (includes availability of the teacher to motivate further study and discussion outside class)	8.81	9	9.33
Adequate number of workshops were conducted for the areas not covered by syllabus	9	9.06	9.45
Interest generated by the teacher	8.75	9.25	9.37
Provision of sufficient time for feedback	8.75	9	9.41
The course has met with the expectations	8.87	9.31	9.08
The faculties could connect with the pre requisite materials for each class	9.37	8.93	9.41
The quality of academic counselling	9	9.12	9.08
The quality of certificate courses	8.87	9.12	9.16
The quality of common room	9.18	9.43	9.33
The quality of computing facilities	9.31	9.43	9.33
The quality of Drinking water facilities	8.87	9.25	9.33
The quality of general laboratories	9.06	9.75	9.37
The quality of hostel accommodation	9.43	9.43	9.5
The quality of library facilities	9.43	9	9.04
The quality of on the job training or internship	9.43	9.06	9.41
The quality of placement	9.5	9.31	9.37
The quality of psychometric counselling	9.25	9.37	9.16
The quality of soft skills training	8.87	9.43	9.16
The quality of specialized laboratories	9.31	9.68	9.66
The quality of sports facilities	9.31	9.31	9.54
The quality of student support facilities	8.87	9.18	9.25
The quality of trainings conducted	9.12	8.81	9.33
The quality of workload distribution for every week	9.25	9.31	9.37
The support provided to address personal financial issues	9.25	8.93	9.54
The timetable was suitable	9.18	9.25	9.41
Your career goal is accomplished at the end of the course	9.37	9.18	9.04

## Comparison based on average score

- Average Score - Overall average of particular question
- Total Average - Average of all questions and responses

- Result - Based on comparison of Total Average with Average Score >

Below is the data where, Institute can focus on improvement areas.

Question	Avg score	Total avg	Result
Ability to design quizzes /Tests / assignments / examinations and projects to evaluate students understanding of the course	9.26	9.24	Ok
Accessibility of the teacher in and out of the class (includes availability of the teacher to motivate further study and discussion outside class)	9.08	9.24	Needs improvement
Adequate number of workshops were conducted for the areas not covered by syllabus	9.21	9.24	Needs improvement
Interest generated by the teacher	9.16	9.24	Needs improvement
Provision of sufficient time for feedback	9.1	9.24	Needs improvement
The course have met with the expectations	9.08	9.24	Needs improvement
The faculties could connect with the pre requisite materials for each class	9.26	9.24	Ok
The quality of academic counselling	9.07	9.24	Needs improvement
The quality of certificate courses	9.07	9.24	Needs improvement
The quality of common room	9.32	9.24	Ok
The quality of computing facilities	9.35	9.24	Ok
The quality of Drinking water facilities	9.17	9.24	Needs improvement
The quality of general laboratories	9.39	9.24	Ok
The quality of hostel accommodation	9.46	9.24	Ok
The quality of library facilities	9.14	9.24	Needs improvement
The quality of on the job training or internship	9.32	9.24	Ok
The quality of placement	9.39	9.24	Ok
The quality of psychometric counselling	9.25	9.24	Ok
The quality of soft skills training	9.16	9.24	Needs improvement
The quality of specialized laboratories	9.57	9.24	Ok
The quality of sports facilities	9.41	9.24	Ok
The quality of student support facilities	9.12	9.24	Needs improvement
The quality of trainings conducted	9.12	9.24	Needs improvement
The quality of workload distribution for every week	9.32	9.24	Ok

The support provided to address personal financial issues	9.28	9.24	Ok
The timetable was suitable	9.3	9.24	Ok
Your career goal is accomplished at the end of the course	9.17	9.24	Needs improvement

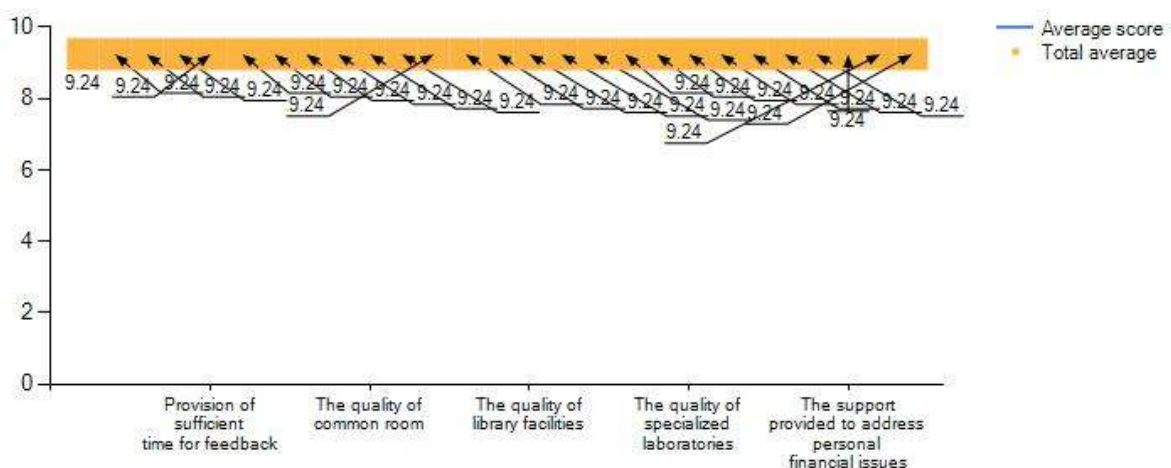


Figure5: Bar Spline Diagram - comparison based on average score

## Comparison of maximum and minimum score

- Average Score - Overall average of particular question
- Total Average - Average of all questions and responses
- Max Score - Maximum score of particular question
- Min Score - Minimum score of particular question
- Result - Based on comparison of Total Average with Average Score

Question	Avg score	Total avg	Max score	Min score	Result
Ability to design quizzes /Tests / assignments / examinations and projects to evaluate students understanding of the course	9.26	9.24	10	8.5	Ok
Accessibility of the teacher in and out of the class (includes availability of the teacher to motivate further study and discussion outside class)	9.08	9.24	10	8.5	Needs improvement
Adequate number of workshops were conducted for the areas not covered by syllabus	9.21	9.24	10	8.5	Needs improvement
Interest generated by the teacher	9.16	9.24	10	8.5	Needs improvement
Provision of sufficient time for feedback	9.1	9.24	10	8.5	Needs improvement
The course has met with the expectations	9.08	9.24	10	8.5	Needs improvement
The faculties could connect with the pre requisite materials for each class	9.26	9.24	10	8.5	Ok
The quality of academic counselling	9.07	9.24	10	8.5	Needs improvement

The quality of certificate courses	9.07	9.24	10	8.5	Needs improvement
The quality of common room	9.32	9.24	10	8.5	Ok
The quality of compouting facilities	9.35	9.24	10	8.5	Ok
The quality of Drinking water facilities	9.17	9.24	10	8.5	Needs improvement
The quality of general laboratories	9.39	9.24	10	8.5	Ok
The quality of hostel accommodation	9.46	9.24	10	8.5	Ok
The quality of library facilities	9.14	9.24	10	8.5	Needs improvement
The quality of on the job training or internship	9.32	9.24	10	8.5	Ok
The quality of placement	9.39	9.24	10	8.5	Ok
The quality of psychometric counselling	9.25	9.24	10	8.5	Ok
The quality of soft skills training	9.16	9.24	10	8.5	Needs improvement
The quality of specialized laboratories	9.57	9.24	10	8.5	Ok
The quality of sports facilities	9.41	9.24	10	8.5	Ok
The quality of student support facilities	9.12	9.24	10	8.5	Needs improvement
The quality of trainings conducted	9.12	9.24	10	8.5	Needs improvement
The quality of workload distribution for every week	9.32	9.24	10	8.5	Ok
The support provided to address personal financial issues	9.28	9.24	10	8.5	Ok
The timetable was suitable	9.3	9.24	10	8.5	Ok
Your career goal is accomplished at the end of the course	9.17	9.24	10	8.5	Needs improvement

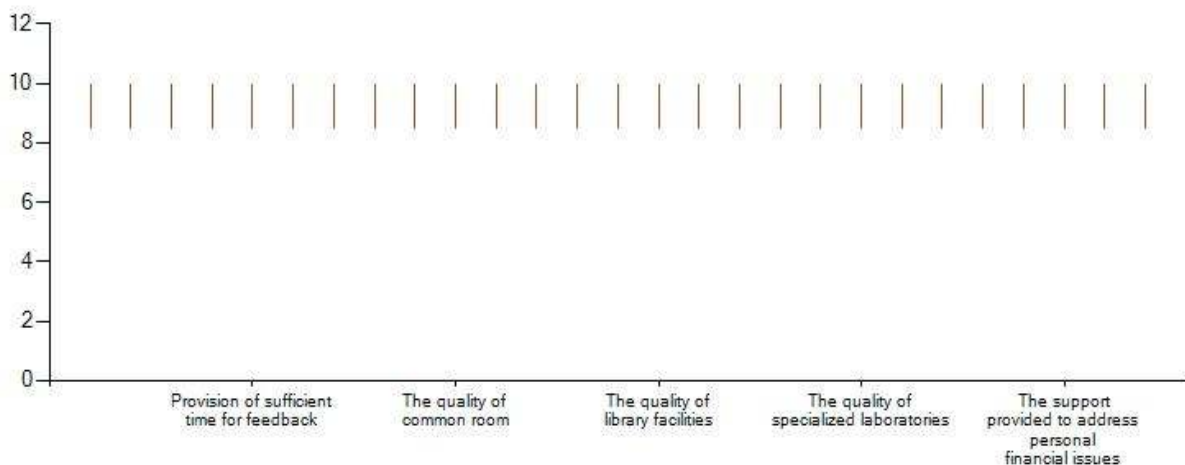


Figure6: Candlestick Diagram - reflects the max & min score